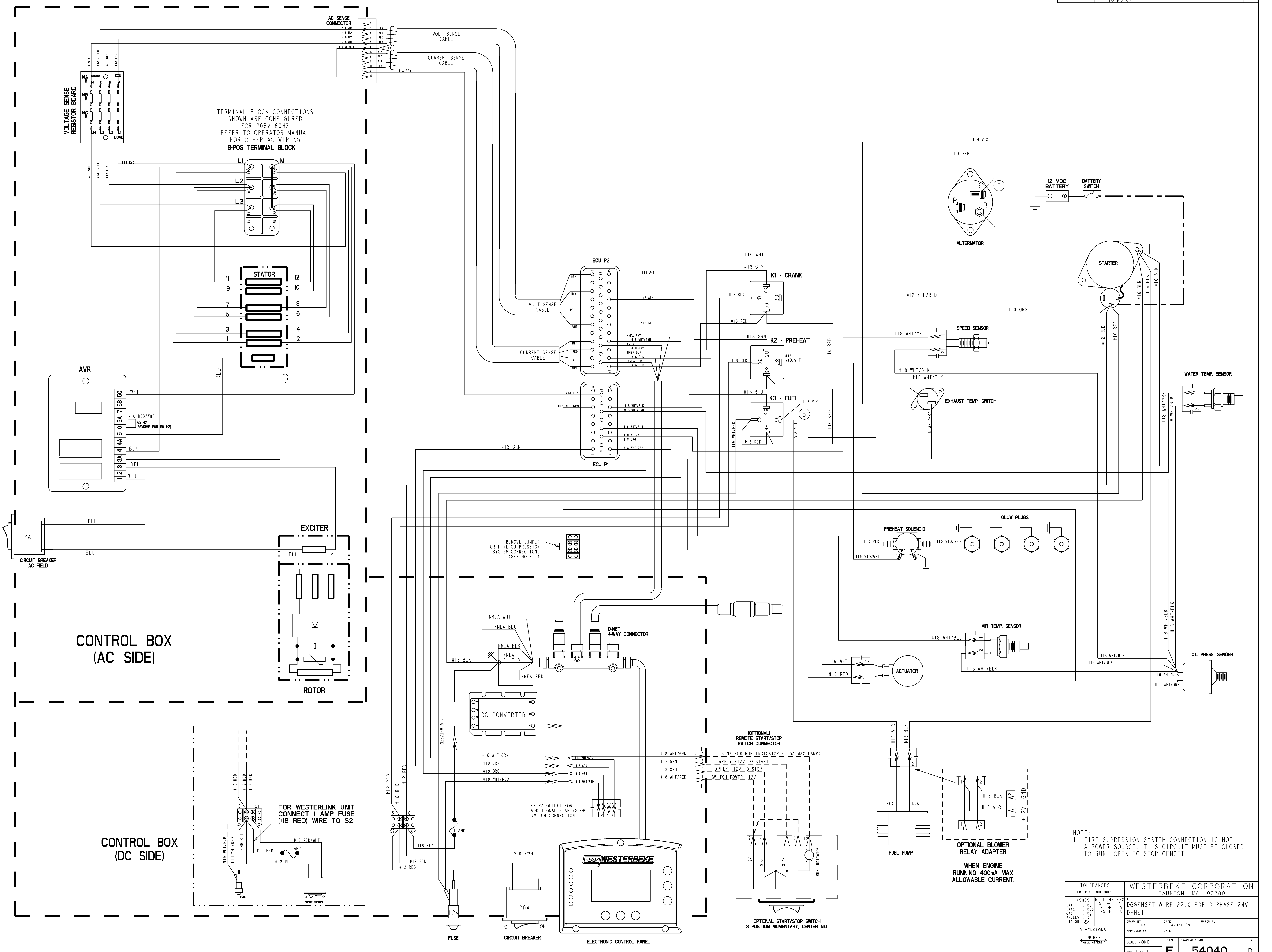


ECO NO.	DATE	REV.	REVISION RECORD	AUTH.	DR. BY
6506	3-4-2008	A	RELEASE PART FOR PRODUCTION.		GA
6614	6-2-2009	B	ACTUATOR PIN 1 WAS CONNECTED TO K3-87. NOW IS CONNECTED TO ALT EXE. ALT EXE WAS CONNECTED TO K3-187, NOW IS CONNECTED TO K3-87.		GA



TERMINAL BLOCK CONNECTIONS SHOWN ARE CONFIGURED FOR 208V 60HZ REFER TO OPERATOR MANUAL FOR OTHER AC WIRING 8-POS TERMINAL BLOCK

REMOVE JUMPER FOR FIRE SUPPRESSION SYSTEM CONNECTION (SEE NOTE 1)

FOR WESTERLINK UNIT CONNECT 1 AMP FUSE (+18 RED) WIRE TO S2

NOTE:
1. FIRE SUPPRESSION SYSTEM CONNECTION IS NOT A POWER SOURCE. THIS CIRCUIT MUST BE CLOSED TO RUN. OPEN TO STOP GENSET.

TOLERANCES (UNLESS OTHERWISE NOTED)		WESTERBEKE CORPORATION TAUNTON, MA. 02780	
INCHES	MILLIMETERS	TITLE	DWGENSET WIRE 22.0 EDE 3 PHASE 24V D-NET
.XX	.02	DATE	4/Jan/08
.XXX	.005	SCALE	NONE
CASST	.XX	SIZE	E
ANGLES	3°	DRAWING NUMBER	54040
FINISH	3X	REV.	B
(WHEN APPLICABLE)		SHT. 1 of 1	